



SPARE PARTS CATALOGUE

Scooter

Electra

Chapter

1. Chassis

2. Shrouds

3. Driving Unit

4. Wheel Suspension / Wheels

5. Seat Unit

6. Electronic

7. Steering Mechanism

8. Options

NOTE: Side dependent parts are declared as RH for right side and LH for left side.
"Left side" and "Right side" are in relation to direction of driving !

INVACARE Ltd
South Road Bridgend Industrial Estate
County Borough of Bridgend CF31 3PY
United Kingdom
Tel.: 1656 664 321
Fax.: 1656 667 532

Release
1 / 2004

Customer :
 Customer No. :
 Phone :

Contact :
 Commission :
Serial No. :



Item	Qty	Part-No.	Part-Designation
-	-		TYPE PLATE
1	-		MODEL DESIGNATION
2	-		SERIAL NUMBER
3	-		PRODUCTION DATE
			<p>You are often only able to find the suitable spare part... the details on the type plate. The type plate is to be ... in a conspicuous position on the chassis.</p> <p>Please quote the serial number, model designation and production date for every order. This helps to prevent misunderstandings.</p>

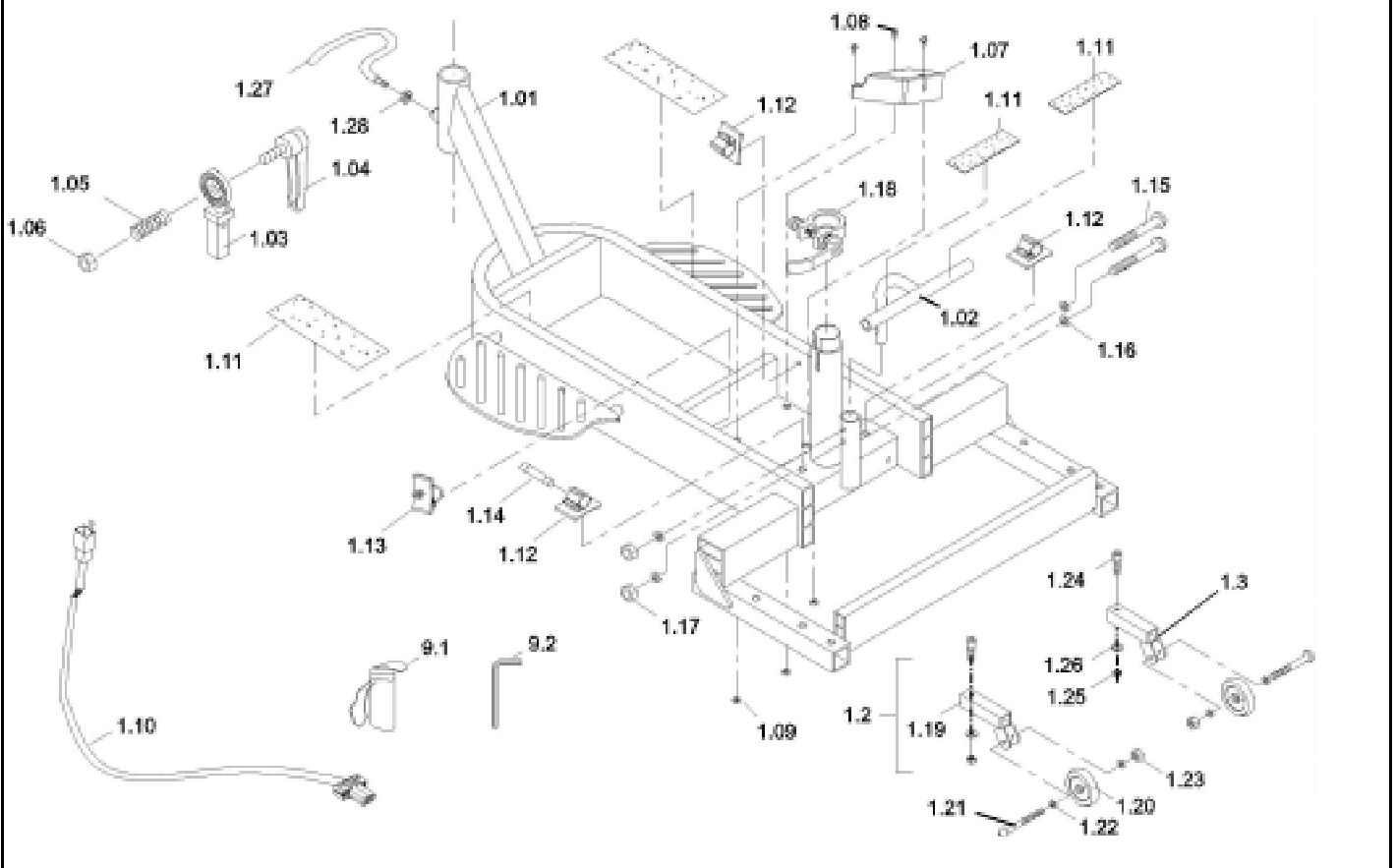
Electra



Release
 01 / 2004
 Chapter
 Sheet

Customer :
 Customer No. :
 Phone :

Contact :
 Commission :
 Serial No. :



Item	Qty	Part-No.	Part-Designation
1.01	1	1424714	FRAME COMPLETE ASSY
1.02	1	1424715	REAR SHROUD SUPPORT TUBE ASSY
-	1	1430169	HANDLEBAR RECEPTACLE ASSY
1.03	1		LOWER RATCHET POST, TILLER
1.04	1		LEVER, TILLER LOCK FOR SCOOTER
1.05	1		SPRING, £p12.7x12Lx1.2t
1.06	1		NUT M10 x P1.5
1.07	1	1421606	CONTROLLER RHINO 70A
1.08	3		SCREW, M4x25
1.09	3		NYLON NUT, M4-P0.7
1.10	1	1424723	POWER CABLE
1.11	2		VELCRO TAPE FEMALE, 2" X 25M
1.12	3	1424726	PUSH TIE-MOUNT (CABLE CLAMP) PTS-0910
1.13	1	1424727	PUSH TIE-MOUNT (CABLE CLAMP) PTS-1214
1.14	1	1421615	FUSE 40A
1.14	1	1433490	FUSE 30A
1.15	2		SCREW, M5 x 30L
1.16	4		WASHER, BLACK, M5
1.17	2		NUT M5
1.18	1	1424732	SEAT CLAMP WITH QUICK RELEASE LEVER
1.19	2		FRAME , ANTI-TIPPER
1.20	2	1424736	WHEEL, 40MM, ANTI-TIPPER
1.21	2		SCREW, M6 X 36.5mm
1.22	4		NYLON WASHER, £p6 x 1.6t
1.23	2		NUT M6

->02/03
 02/03->

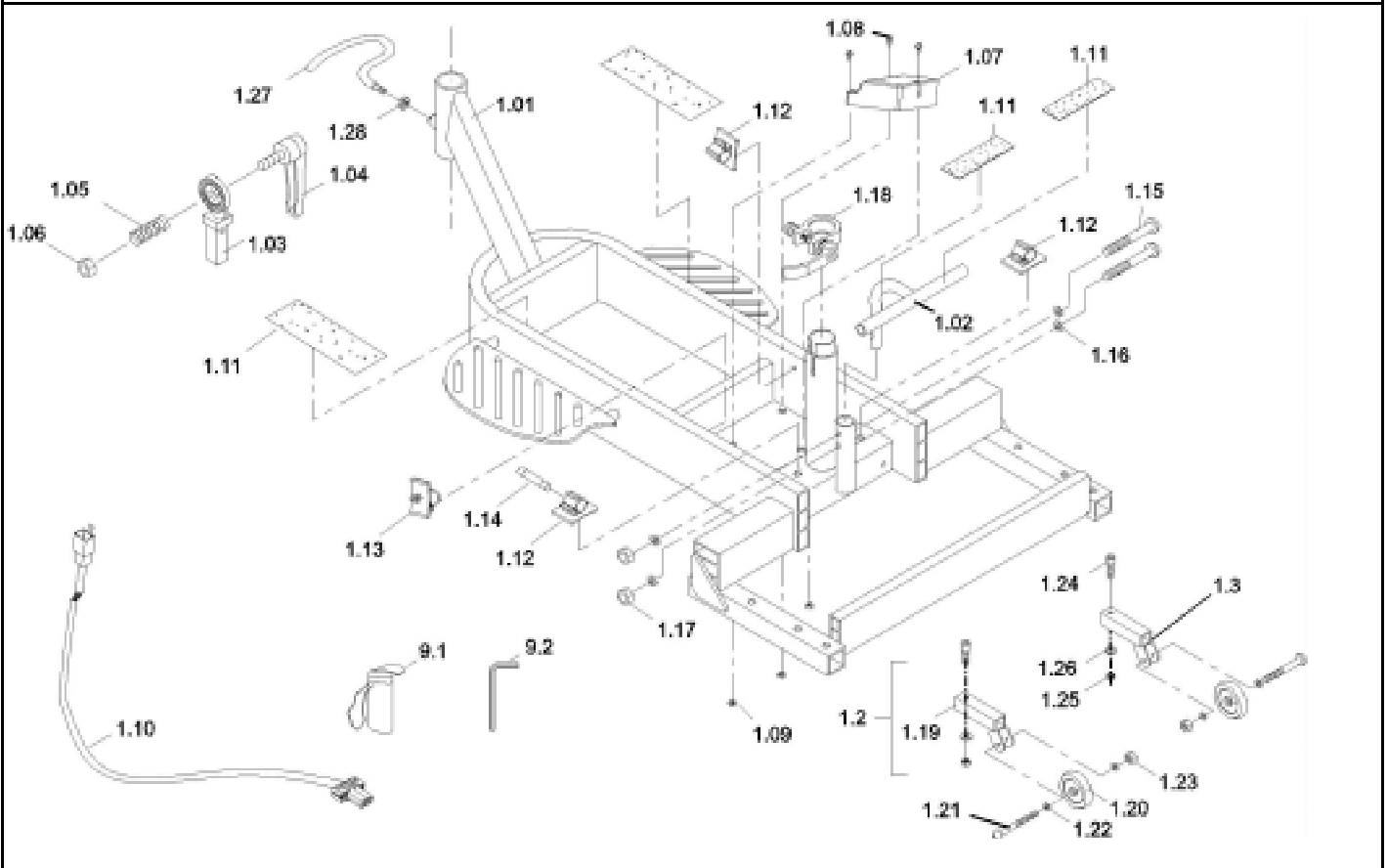
Electra



Release
 01 / 2004
 Chapter 1
 Sheet 1

Customer :
 Customer No. :
 Phone :

Contact :
 Commission :
 Serial No. :



Item	Qty	Part-No.	Part-Designation
1.24	2		CAPSCREW, ALLEN HEAD M8*40L (BLACK)
1.25	2		NYLON NUT, M8*P-1.25 BLACK
1.26	2		WASHER, 8x1.6t (£p18)
1.27	1	1424743	HOOK HANDLE
1.28	1		NYLON NUT, M8
1.2	1	1425246	ANTI-TIPPER ASSY (L)
1.3	1	1425247	ANTI-TIPPER ASSY (R)
-	1	1430168	TOOLKIT CPL.
9.1	1		WRENCH BAG
9.2	1		ALLEN KEY, 3 MM

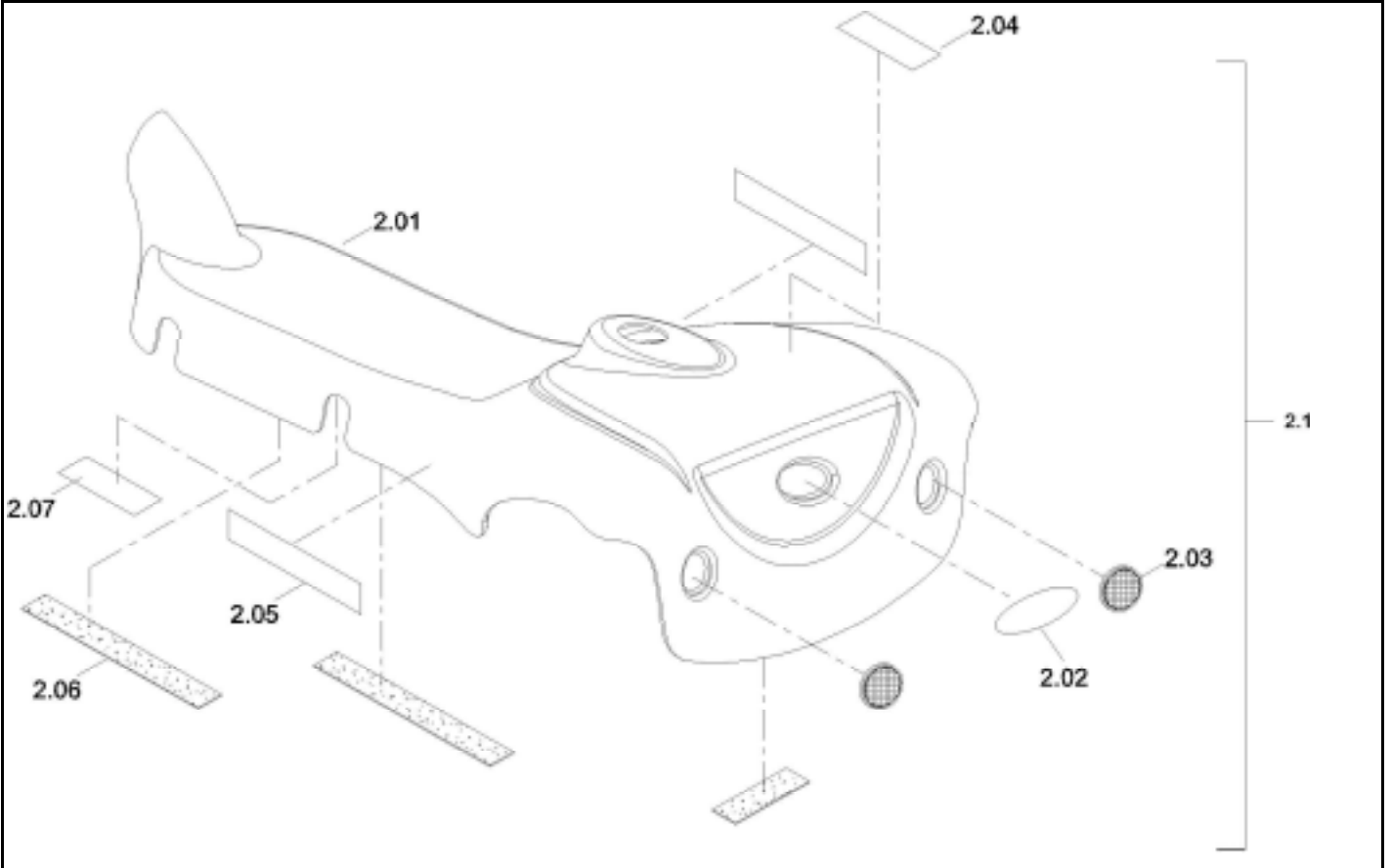
Electra



Release
 01 / 2004
 Chapter 1
 Sheet 2

Customer :
 Customer No. :
 Phone :

Contact :
 Commission :
Serial No. :



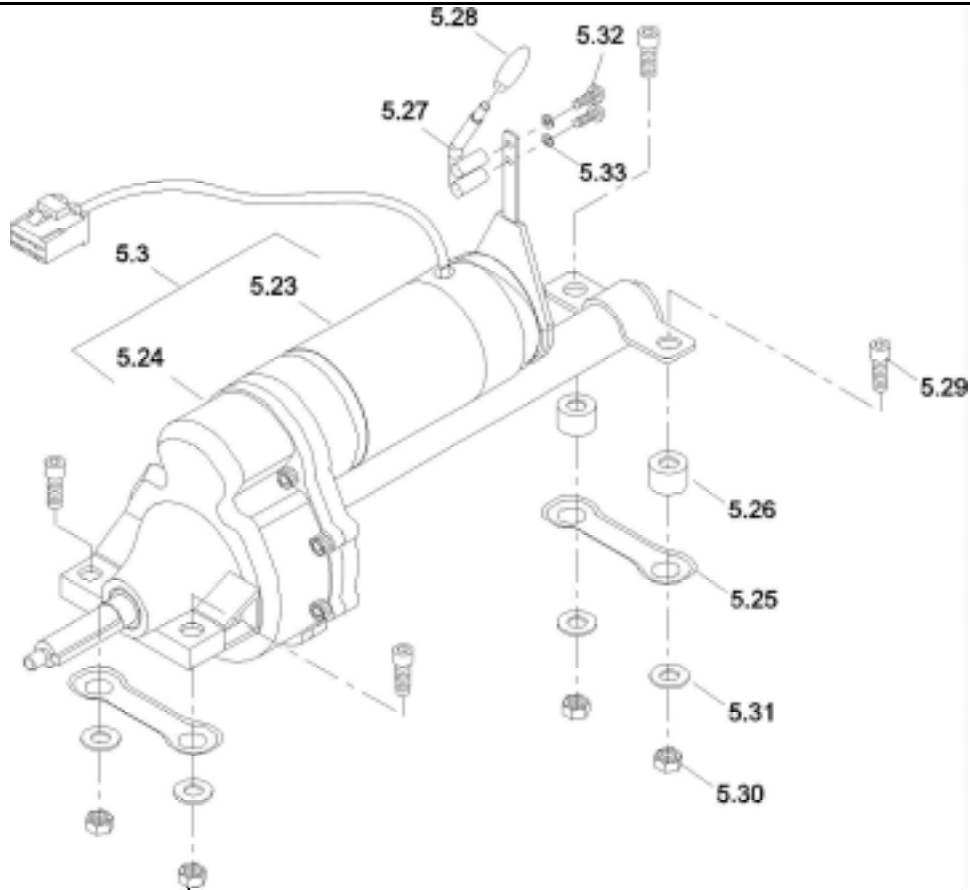
<i>Item</i>	<i>Qty</i>	<i>Part-No.</i>	<i>Part-Designation</i>
2.1	1	1425248	SHROUD ASSY
2.01	1		SHROUD
2.02	1	1425785	DECAL, "INVACARE"
2.03	2	1425251	REFLECTOR
2.04	1	1425252	STICKER, CLUTCH
2.05	2	1425253	DECAL, Electra
2.06	2		VELCRO TAPE, 2" X 25M, MALE
2.07	1	1425255	STICKER, BATTERY CIRCUIT DIAGRAM

Electra



Customer :
 Customer No. :
 Phone :

Contact :
 Commission :
 Serial No. :



Item	Qty	Part-No.	Part-Designation
5.3	1	1425829	TRANSMISSION ASSY
5.23	1	1425817	MOTOR/BRAKE ASSY
5.24	1	1425818	REDUCTION GEARING
-	1	1430172	MAGNETIC BRAKE
-	1	1430173	CARBON BRUSH SET
-	1	1430170	DISENGAGING LEVER
5.27	1		DISENGAGE BAR
5.28	1	1425822	GRIP (ELLIPSE)
5.32	2		SCREW, M5
5.33	2		SPRING WASHER, M5
-	2	1430171	FIXING SET DRIVE
5.25	2		BUFFER PLATE (RUBBER)
5.26	2		SPACER
5.29	4		CAPSCREW, ALLEN HEAD M8*55L (BLACK)
5.29	4		CAPSCREW, ALLEN HEAD M8*55L (BLACK)
5.30	4		NYLON NUT, M8*P-1.25 BLACK
5.31	4		WASHER, 8x1.6t (£p18)

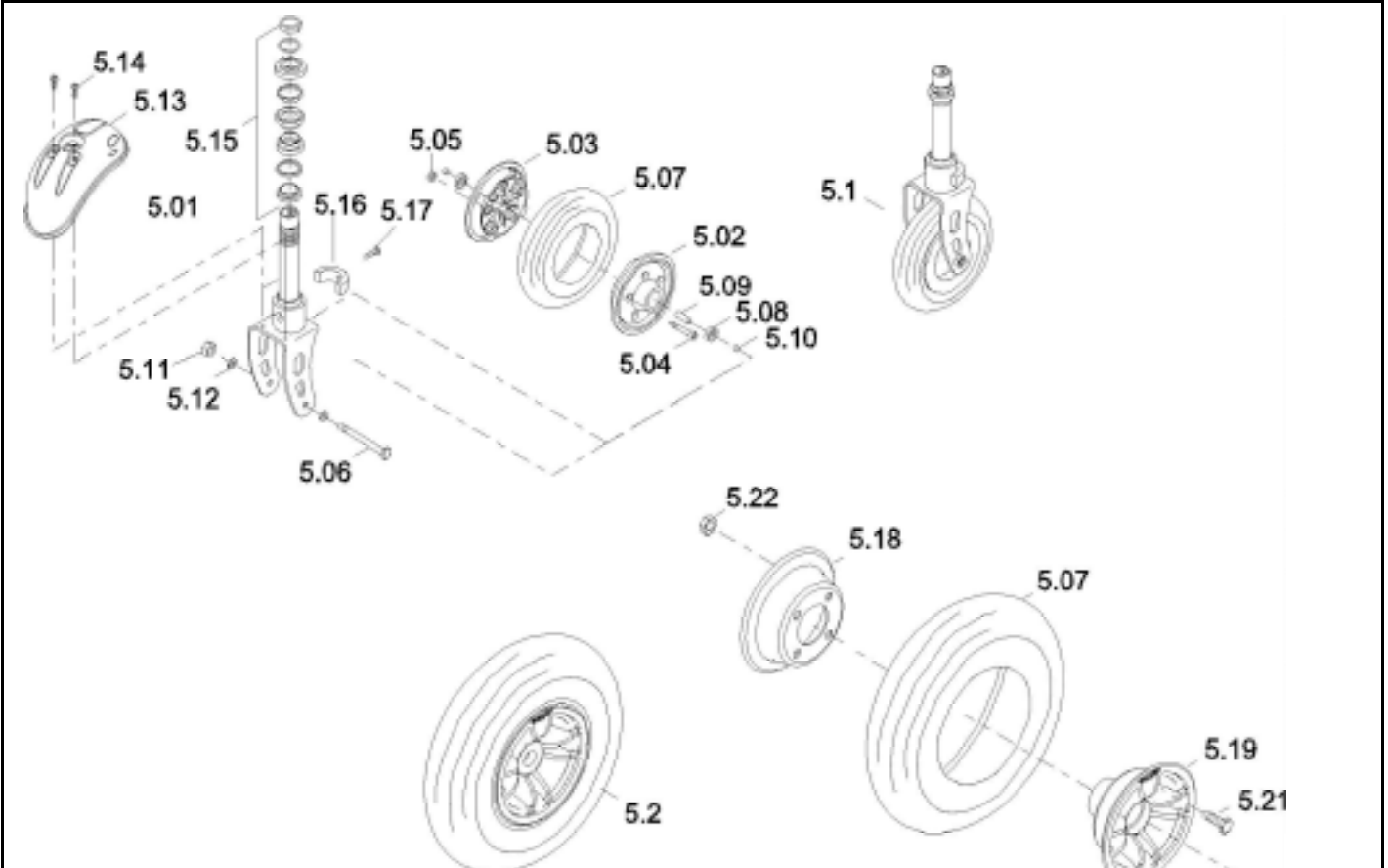
Electra



Release
 01 / 2004
 Chapter 3
 Sheet 1

Customer :
 Customer No. :
 Phone :

Contact :
 Commission :
 Serial No. :



Item	Qty	Part-No.	Part-Designation
5.1	1	1425788	FRONT WHEEL ASSY
5.01	1	1425793	FRONT FORK SET
-	1	1430174	FRONT WHEEL ASS'Y:
5.02	1		RIM, 5H, BLACK, 200 x 50 WHEEL
5.03	1		RIM, 6H, BLACK, 200 x 50 WHEEL
5.04	5		CAPSCREW, ALLEN HEAD, M6 x 30L
5.05	5		NYLON NUT, BLACK, M6
5.07	1	1425814	FOAM PUNCTURE-PROOF SOLID INLAY, 200x50
5.08	2	1425800	BEARING, 608ZZ
5.09	1		SPACER, £p11 x 1.2t x 42L
5.10	2		SPACER, £p11x1.2tx3.1L
-	1	1430175	FRONT AXLE ASS'Y:
5.06	1		AXLE, BLACK, M8 x 82L
5.11	1		NYLON NUT, M8*P-1.25 BLACK
5.12	2		WASHER, M8
5.13	1	1425807	COVER, FRONT WHEEL
5.13	1	1425807	COVER, FRONT WHEEL
5.14	2		SCREW, M6*10L
5.15	1	1421014	STEERING BEARING ASS'Y
5.16	1		STOPPER, TILLER SWING
5.17	1		BOLT, BLACK, M6 x 25
5.18	1		RIM (B), 7" TYRE
5.19	1		RIM, REAR WHEEL
5.21	4		HEX. HEAD SCREW, M8x15L
5.22	4		NYLON NUT, M8*P-1.25 BLACK

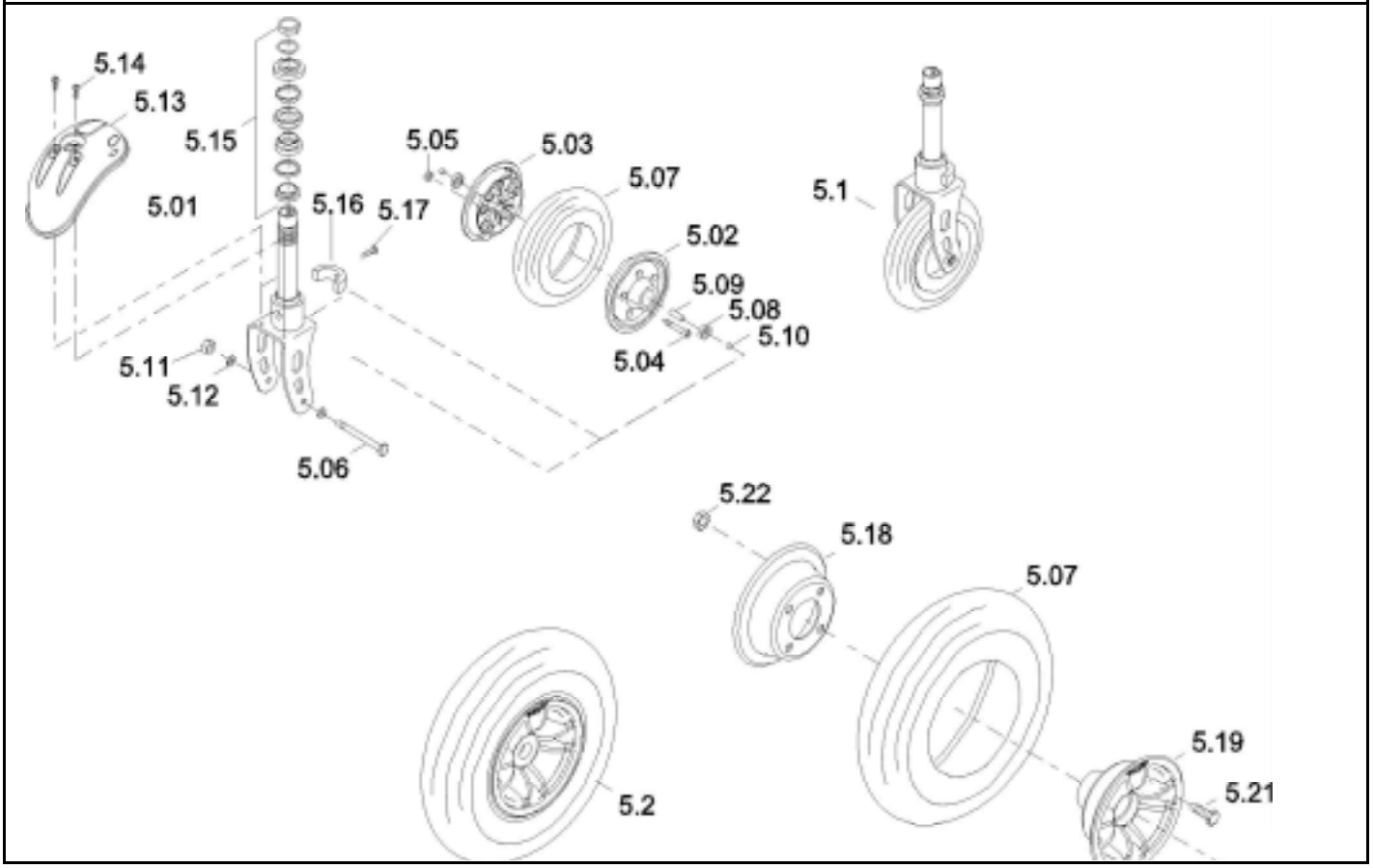
Electra



Release
 01 / 2004
 Chapter 4
 Sheet 1

Customer :
 Customer No. :
 Phone :

Contact :
 Commission :
 Serial No. :



<i>Item</i>	<i>Qty</i>	<i>Part-No.</i>	<i>Part-Designation</i>
5.2	2	1425828	REAR WHEEL ASSY

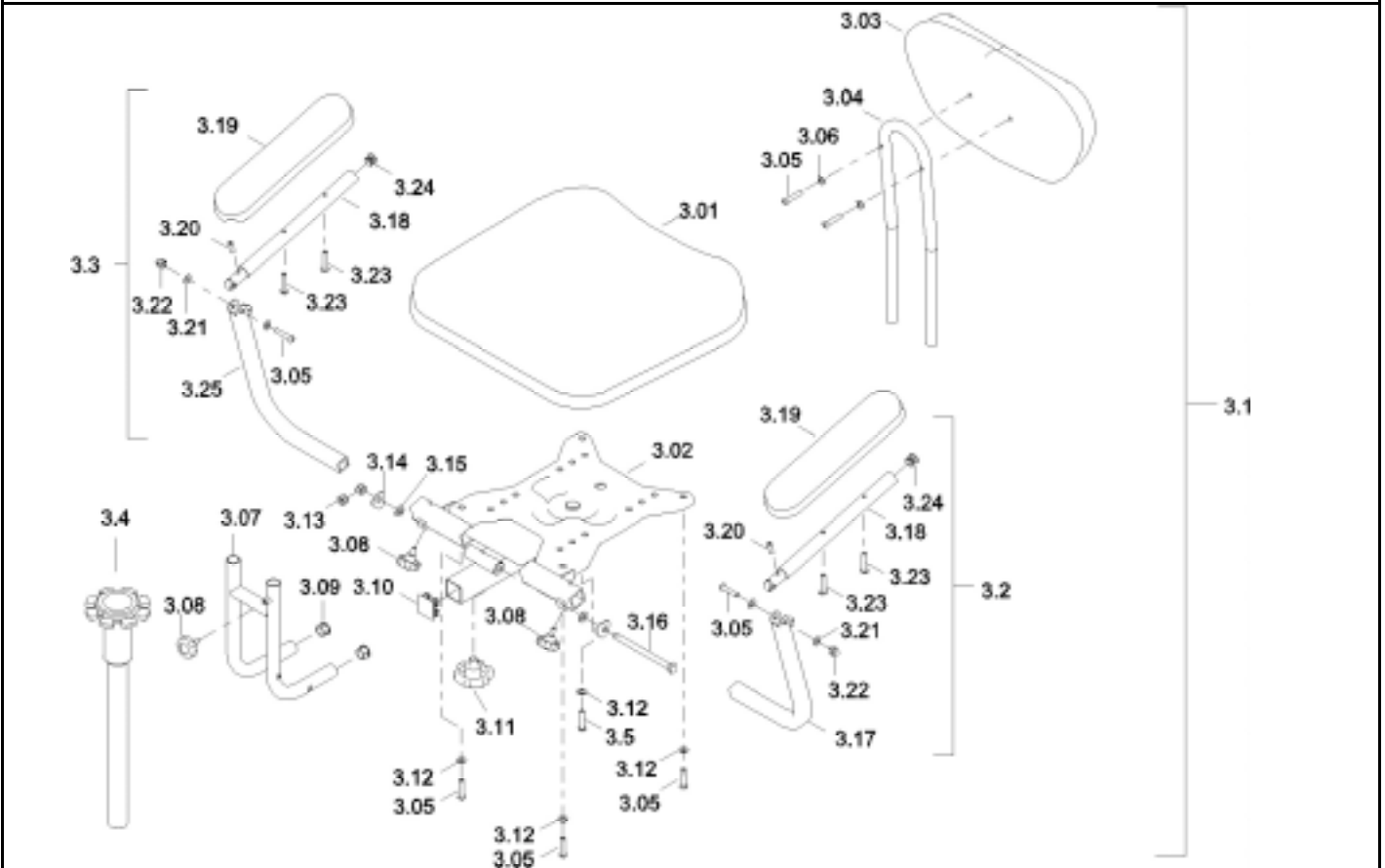
Electra



Release
 01 / 2004
 Chapter 4
 Sheet 2

Customer :
 Customer No. :
 Phone :

Contact :
 Commission :
 Serial No. :



Item	Qty	Part-No.	Part-Designation
3.1	1	1425257	SEAT ASS'Y., S232
-	1	1430176	SEAT PLATE, PREASSEMBLED
3.01	1	1425258	SEAT ONLY, BLACK, S232
3.02	1		SEAT PLATE
3.05	4		SCREW, M6 x 30L
3.08	2	1425266	KNOB, BLACK
3.10	1	1425310	END PLUG, SQUARE, 30x30
3.11	1	1421594	KNOB, M10 x 13L
3.12	4		WASHER, £p13x£p6.5x1.0t
3.13	1		NYLON NUT, M10
3.14	2		CONCAVE WASHER, M8
3.15	2		WASHER, M8*1.5t(£p16)
3.16	1		AXLE BOLT, M8 x 110L
-	1	1430178	BACKREST ASS'Y:
3.03	1	1425261	BACK ONLY, BLACK, S232
3.04	1		UPPER BACKREST TUBE, S232
3.05	4		SCREW, M6 x 30L
3.06	2		WASHER, BLACK, £p13x£p6.5x1.1t
-	1	1430177	BACKREST ATTACHMENT ASS'Y:
3.07	1		LOWER BACKREST TUBE,S232
3.08	1	1425266	KNOB, BLACK
3.09	2	1425328	PLUG
3.17	1		SUPPORT TUBE, ARMREST,RH
3.25	1		SUPPORT TUBE, ARMREST,LH
3.18	2		ARMREST TUBE

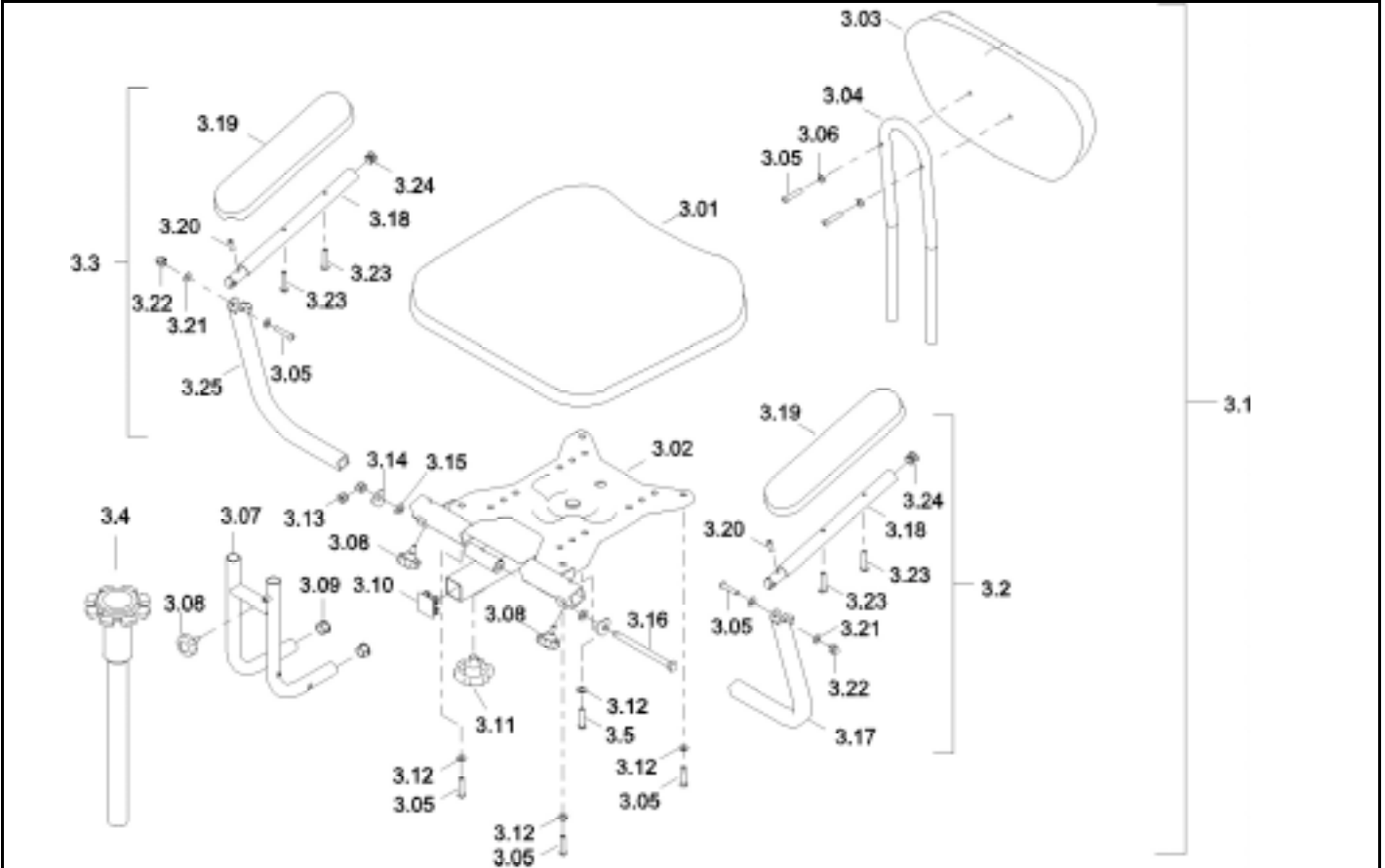
Electra



Release
 01 / 2004
 Chapter 5
 Sheet 1

Customer :
 Customer No. :
 Phone :

Contact :
 Commission :
 Serial No. :



Item	Qty	Part-No.	Part-Designation
3.19	2	1425323	PADDED ARM PAD, BLACK, DESK LENGTH
3.20	2		SET SCREW, M6x16
3.21	4		WASHER, M6 x 1.0t
3.22	2		NUT WITH PLASTIC CAP, 6 MM THREAD
3.23	4		SCREW, M6 x 30L
3.24	2	1425328	PLUG
3.2	1	1425329	ARMREST TUBE WITH ARMPAD ASS'Y., RH
3.3	1	1425330	ARMREST TUBE WITH ARMPAD ASS'Y., LH
3.4	1	1425331	SEAT POST ASSY

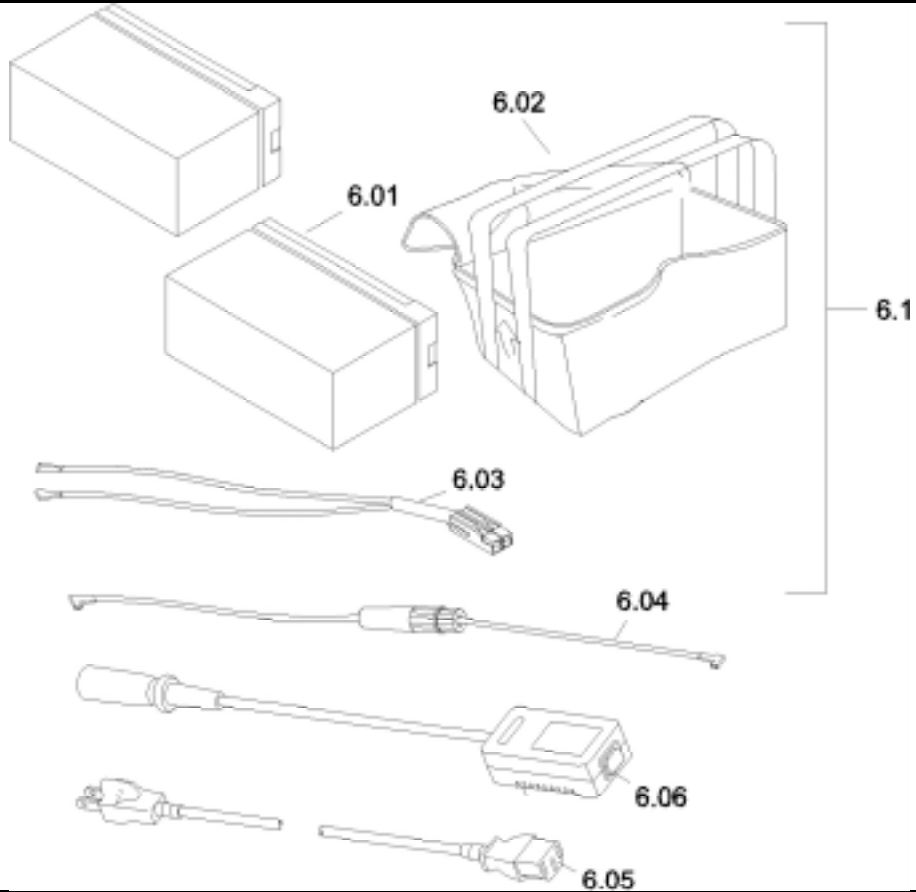
Electra



Release
 01 / 2004
 Chapter 5
 Sheet 2

Customer :
 Customer No. :
 Phone :

Contact :
 Commission :
 Serial No. :



Item	Qty	Part-No.	Part-Designation
6.1	1	1425830	BATTERY PACK
6.01	2	1425831	BATTERY, SP-53
6.02	1	1425832	BAG (BLACK)
6.03	1	1425833	CABLE (CONNECTER INCLUDED)
6.04	1	1425834	CABLE (FUSE INCLUDED)
6.05	1	P21080	MAINS CABLE GCB-0403 UK; BLACK
6.05	1	P21079	MAINS CABLE GCB-0401 CONTINENTAL; BLACK
6.06	1	1425836	CHARGER, OFF BOARD HP1202-24V-1.8A 90-260V

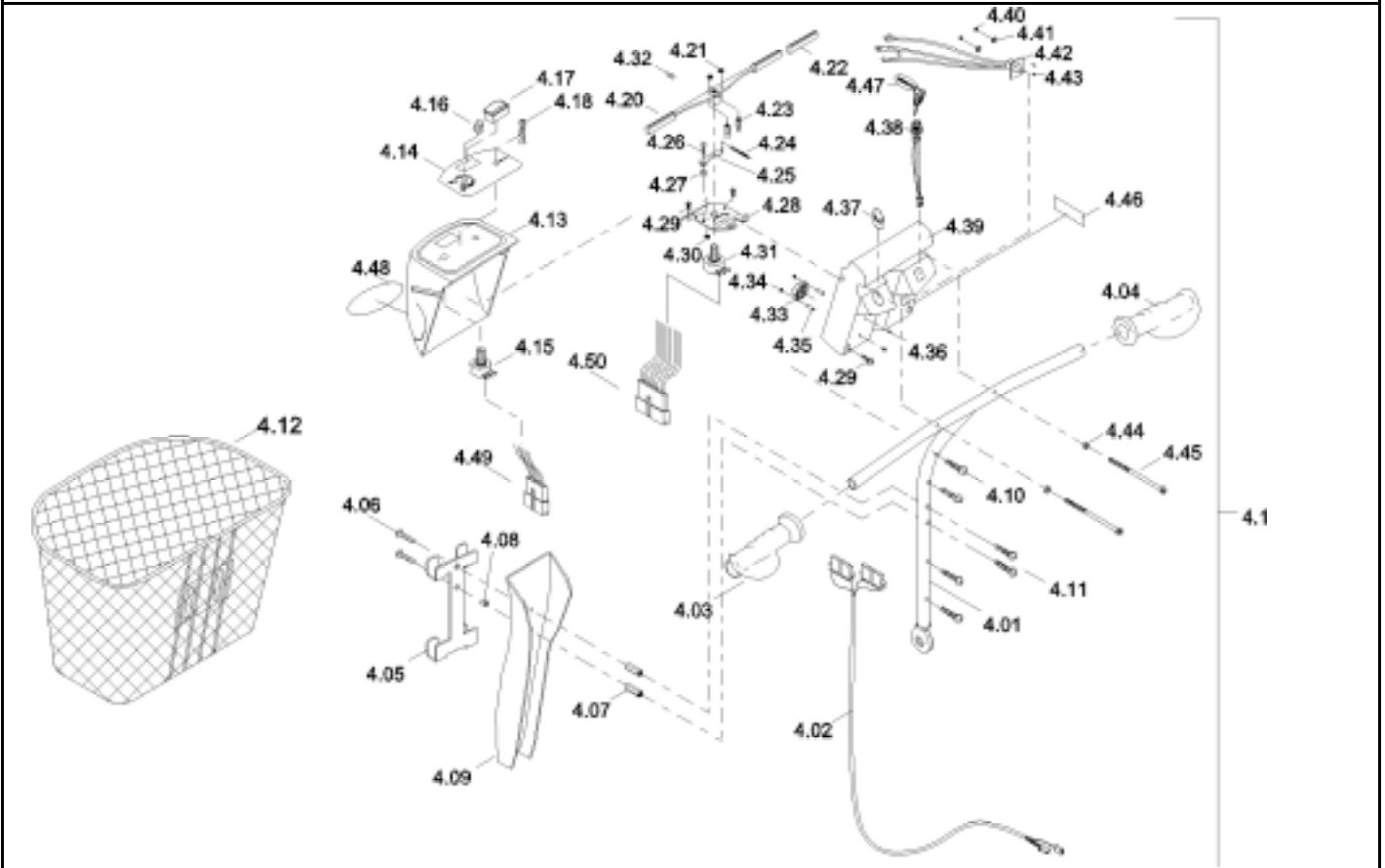
Electra



Release
 01 / 2004
 Chapter 6
 Sheet 1

Customer :
 Customer No. :
 Phone :

Contact :
 Commission :
 Serial No. :



Item	Qty	Part-No.	Part-Designation
4.1	1	1425332	TILLER ASS'Y., SAFIRBLUE
4.01	1	1425333	TILLER ONLY, CP, S533
4.02	1	1425334	MAIN CABLE LOOM
4.03	1	1425335	GRIP, LH, FW-6AN
4.04	1	1425336	GRIP, RH, FW-6AN
4.05	1	1425337	MOUNTING BASKET
4.06	2		SCREW, M6*10L
4.07	2		BASKET POST, M6x1.0x20L
4.08	1		SPACER, (CP) SUM £p10* £p6*4.1L
4.09	1	1425341	TILLER COVER, FRONT, SAFIRBLUE
4.10	4		SCREW M4X30L
4.11	2		SCREW, M6x35L
4.12	1	1425745	BASKET
-	1	1430193	STEERING COVER, TOP PREASSEMBLED
4.13	1		UPPER DASH BOARD COVER, SAFIRBLUE
4.14	1		DECAL, DASH BOARD, S532
4.15	1	1425748	POT., VR30K, COSMOS RV24
4.16	1	1425749	SPEED KNOB
4.17	1	1425750	FUEL GAGE
4.18	1	1425751	POWER INDICATOR, SCOOTER
4.48	1		DECAL, "INVACARE"
4.49	1	1425786	CONNECTOR & WIRE SET, UPPER DASH BOARD
-	1	1430194	STEERING COVER, BOTTOM PREASSEMBLED
-	1	1430195	DRIVE LEVER ASS'Y:
4.20	1		THROTTLE LEVER, CP

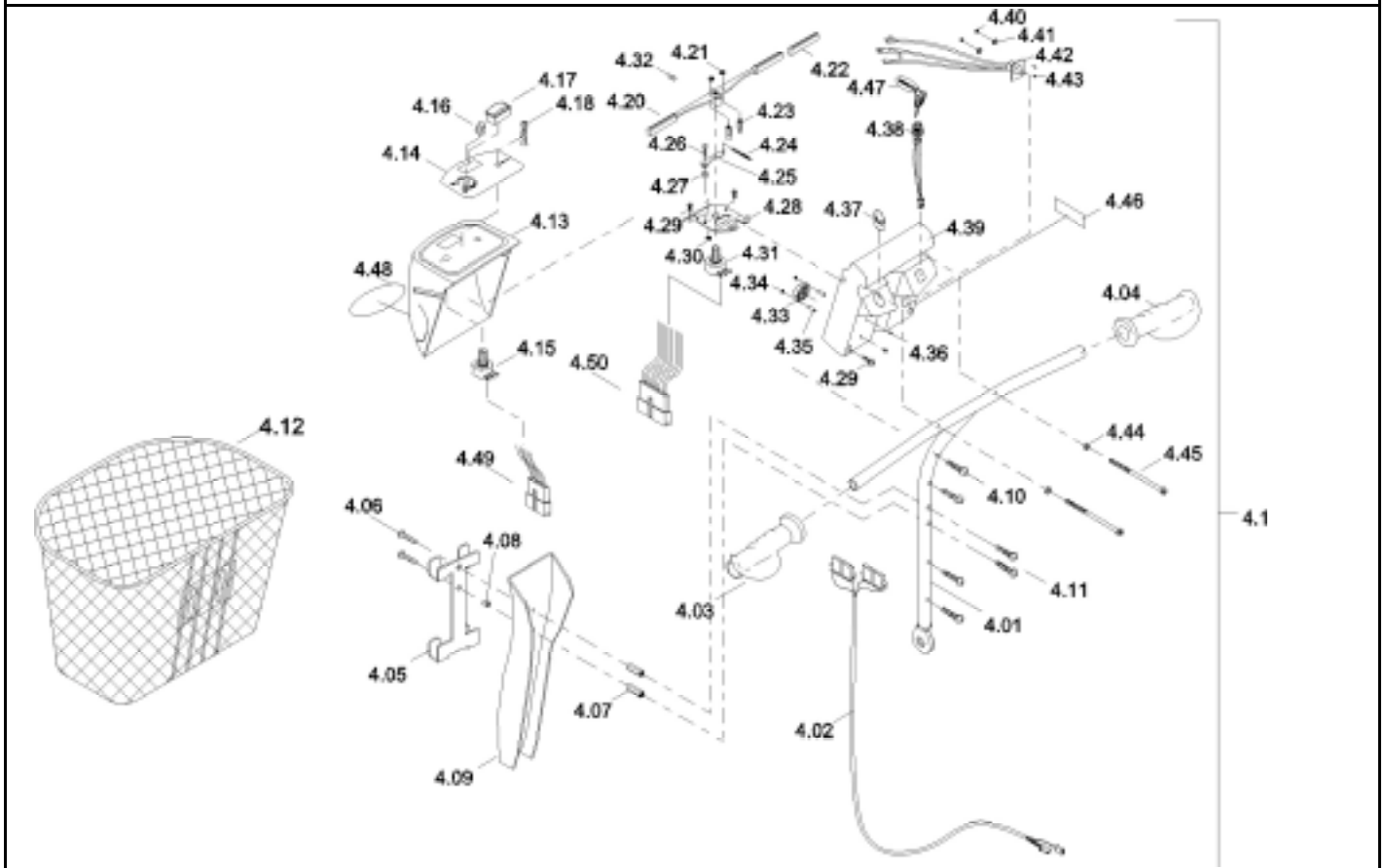
Electra



Release
 01 / 2004
 Chapter 7
 Sheet 1

Customer :
 Customer No. :
 Phone :

Contact :
 Commission :
 Serial No. :



Item	Qty	Part-No.	Part-Designation
4.21	2		NYLON NUT, M3
4.22	2		VINYL TIP, THROTTLE LEVER
4.23	2		STEEL PIN, £p5x28L, THROTTLE
4.24	1	1425760	SPRING, POT.RETURN
4.25	1		SETTING PLATE, POT.
4.26	1		SCREW, M4 x 20L
4.27	1		SPACER
4.28	1		BASE, POT
4.29	4		SCREW M4 x P0.7 x 10I
4.30	1		NYLON NUT, M4
4.32	2		SET SCREW M5*5
4.31	1	1421628	POTENTIOMETER
4.33	1	1425769	BUZZER
4.34	2		NYLON NUT, M3
4.35	2		SPACER, £p6.4x£p4x19.47L
4.36	2		SCREW, M3 X 30
4.37	1	1425773	HORN SWTICH
4.38	1	1425774	KEY SWITCH
4.39	1		LOWER DASH BOARD COVER, SAFIRBLUE
4.40	2		NUT, M2
4.41	2		SPRING WASHER, M2
4.42	1	1425779	CABLE, CHARGING SOCKET
4.43	2		SCREW, M2 x 12L
4.46	1		STICKER, CHARGER PORT
4.47	1	1425784	KEY SET

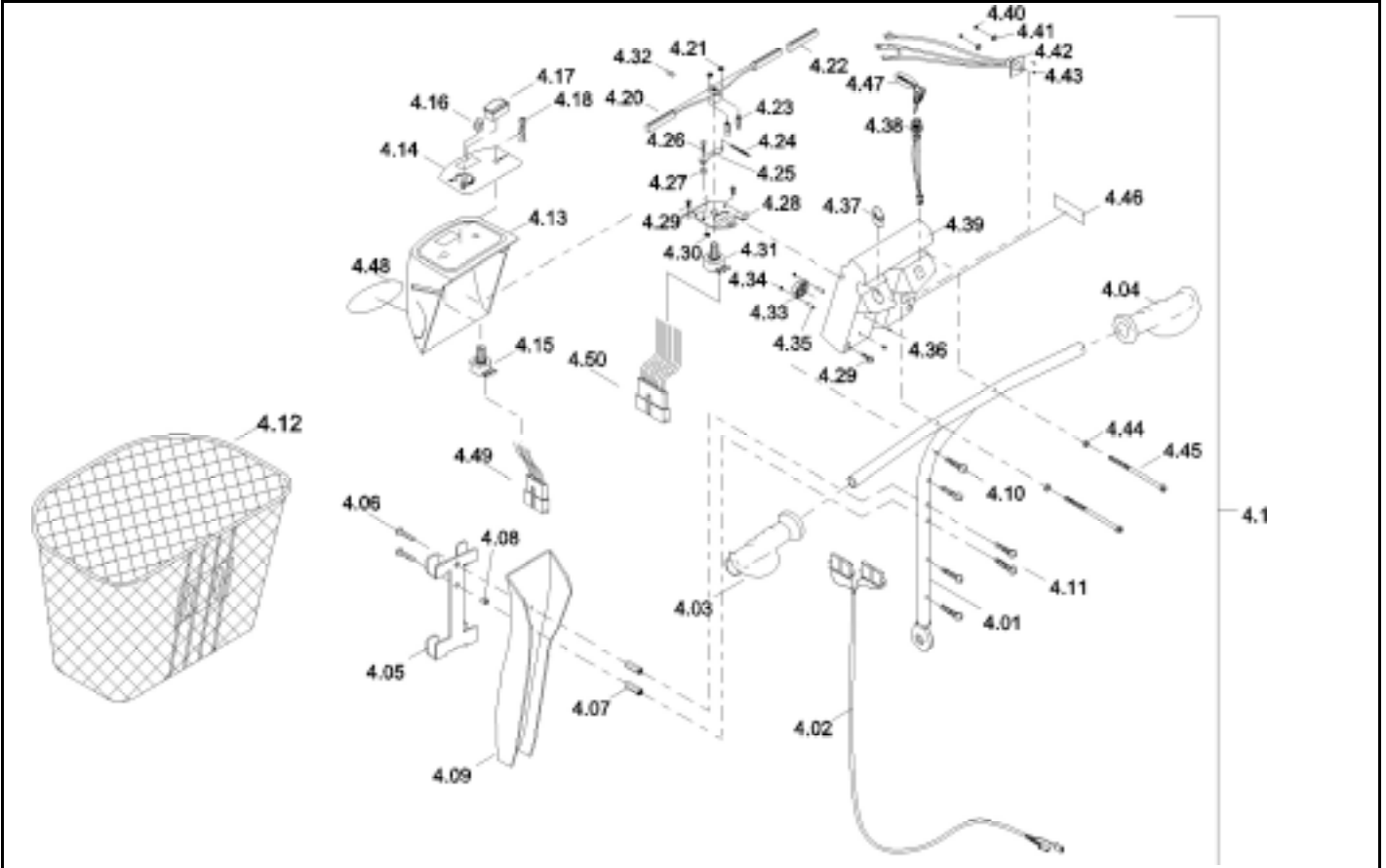
Electra



Release
 01 / 2004
 Chapter 7
 Sheet 2

Customer :
Customer No. :
Phone :

Contact :
Commission :
Serial No. :



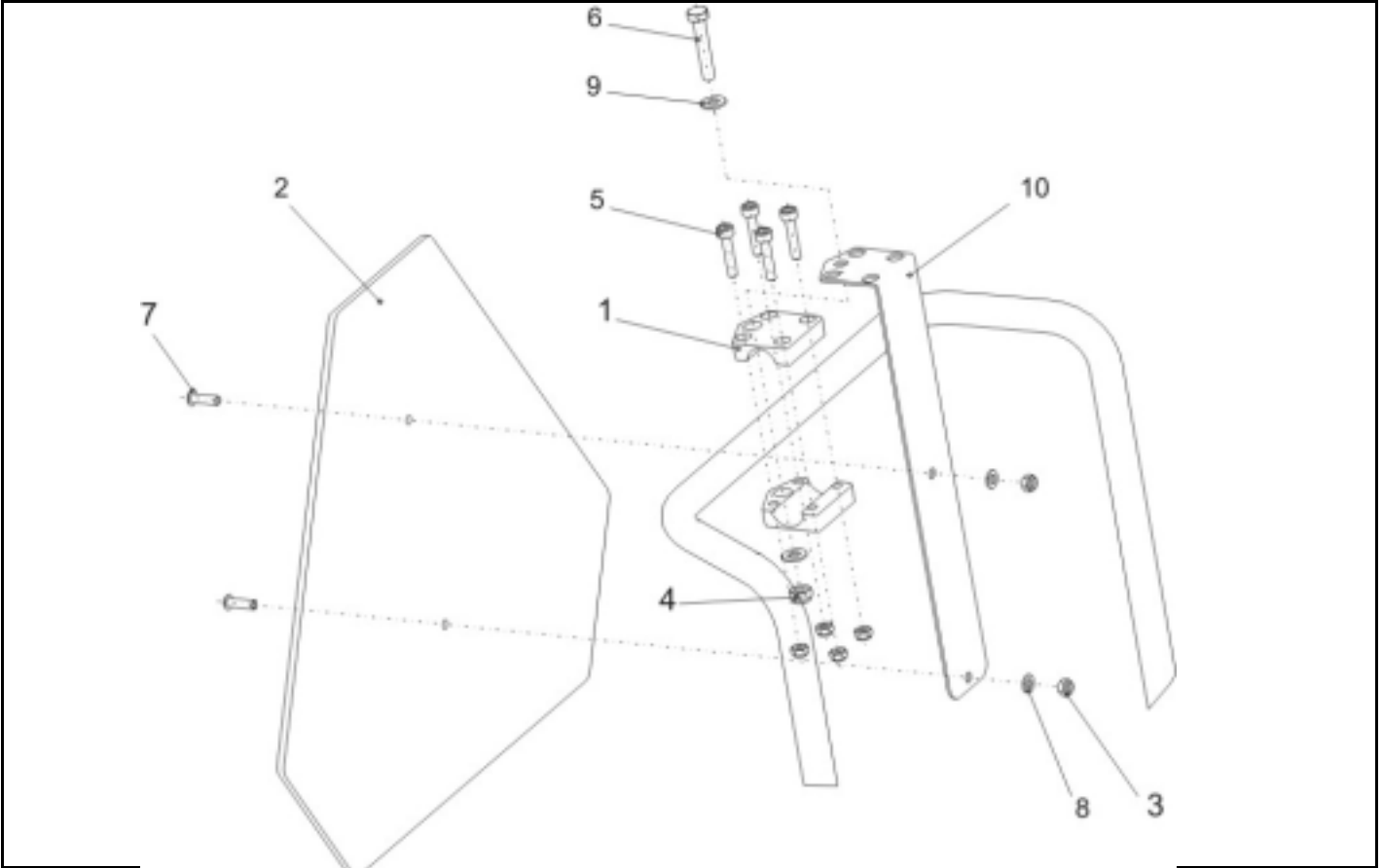
<i>Item</i>	<i>Qty</i>	<i>Part-No.</i>	<i>Part-Designation</i>
4.50	1	1425787	CONNECTOR & WIRE SET , LOWER DASH BOARD
4.44	2		DASH WASHER, M4
4.45	2		SCREW, M4 x 95L

Electra



Customer :
 Customer No. :
 Phone :

Contact :
 Commission :
 Serial No. :



Item	Qty	Part-No.	Part-Designation
-	1	SP1430410	REAR MARKING SIGN ECE-R 69 CPL.
1	2		GRIPPING CLIP W. HEXAGON HOLE
2	1	1430834	REAR MARKING SIGN ECE-R 69
3	6		NYLOC NUT M6
4	1		NYLOC NUT M8
5	4		SOCKET HEAD CAP SCREW M6 X 30
6	1		AXLE BOLT M8 X 45
7	2		BUTTONHEAD SOCKET SCREW, M6 X 20
8	2		WASHER 6,4 X 12,5 X 1,6
9	2		WASHER 8,4 X 17 X 1,6
10	1		FIXING BRACKET FOR REAR SIGN/RAL 9005

Electra



Release
 01 / 2004
 Chapter 8
 Sheet 1